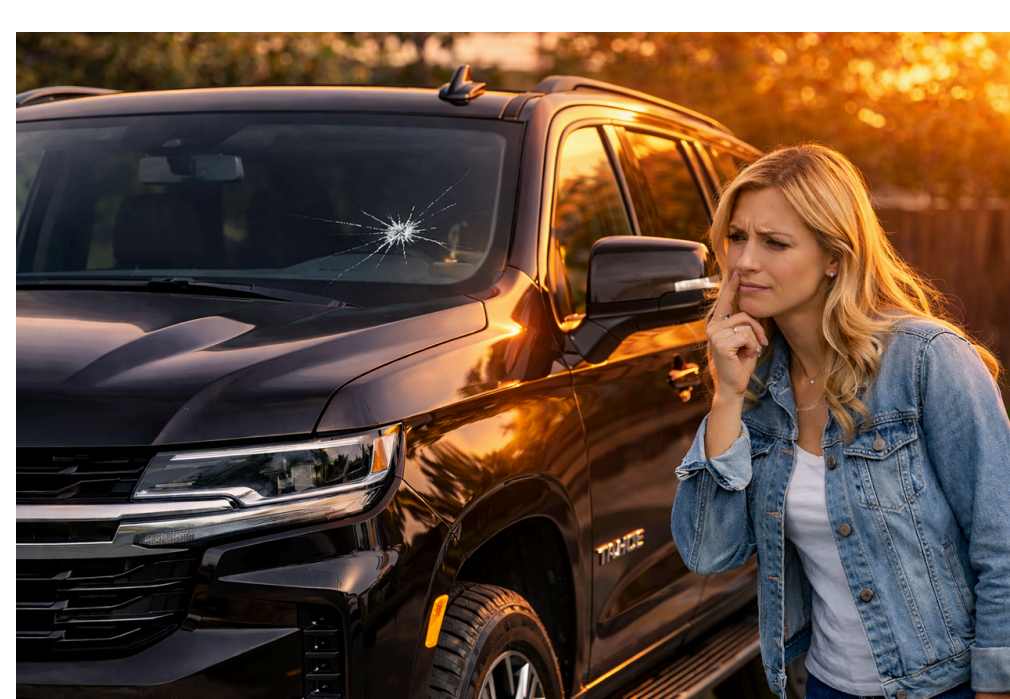


A cracked windshield regularly appears to be like to expose up on the incorrect day. Maybe you had been cruising down I-26 prior the French Broad whilst a quarry truck shed a pebble. Or you got here back on your car or truck near Pack Square and located a cold crack snaking from the threshold after the temperature dropped. However it happened, that blemish is greater than cosmetic. Your windshield ties into the motor vehicle's layout and, in lots of circumstances, into the advanced driving force counsel approaches that watch the street for you. Treat it as safeguard equipment, no longer just glass.



I've spent years in and around Asheville automobile glass stores and fleet yards, and I've noticed the equal styles repeat. Small chips that linger thru a summer season turn into palm-length cracks after one Blue Ridge chilly snap. Wipers move from cleansing to grinding because of a unmarried grain of sand. And drivers cast off a trouble-free resin restoration till it turns into a full Asheville windshield substitute and a calibration appointment. The aspect of a security inspection listing is to gradual that chain reaction and lend a hand you to decide right away and confidently: restore now, substitute soon, or continue driving and computer screen.

Why this issues here

Western North Carolina throws the complete playbook at car glass. Our mountain roads mean bigger wind load, extra elevation alternate, and generic gravel. The local weather swings quickly. A sunny midday can change into a 30-degree night time, and that temperature differential forces rigidity cracks to extend. The town uses sand, cinders, and brine in iciness, which raises chip threat. Parked cars reside lower than o.k. and pines, so sap, needles, and falling branches are section of lifestyles. These neighborhood motives make timing and process matter for Asheville cracked windshield restoration and, when needed, Asheville car glass substitute.

How your windshield really works

Modern windshields are laminated glass: two sheets sandwiching a polyvinyl butyral interlayer. That inner layer holds mutually on have an effect on and provides the glass some flex. The glass also bonds to the frame with urethane adhesive that acts like a structural seam. On many autos, the windshield allows hold roof load, directs airbag deployment, and anchors cameras and sensors. Subaru EyeSight, Honda Sensing, Toyota Safety Sense, GM Super Cruise, and masses of others glance through the glass. If the glass situation or clarity adjustments, those procedures can misinterpret the world. Asheville windshield restore or alternative is not as regards to preserving rain out, it's approximately maintaining the auto's protection web aligned.



The swift triage you might do to your driveway

Before you call an Asheville vehicle glass carrier or publication cell windshield fix Asheville drivers frequently opt for, that you could run a five-minute triage that varieties the minor from the urgent. Park in the shade if plausible, wipe the glass with washer fluid and a microfiber towel, then start from the outside.

- Size and kind of destroy: Is it a coin-sized chip, a brief crack beneath 6 inches, or a long crack that maintains becoming?
- Location: Is it in the motive force's direct line of sight, near the glass area, or around a sensor housing?
- Contamination: Is there airborne dirt and dust, moisture, or highway film lodged within the damage?
- Structural unfold: Are there distinct legs radiating from the impact, or a crack touching the sting?
- Weather and strain: Has the duration modified with recent temperature swings or car or truck washes?

That's your first checklist. If any solution sets off alarm bells, you'll already understand what to tell the Asheville windshield fix technician for those who call.

Understanding the holiday: chips as opposed to cracks

A chip is oftentimes due to an instantaneous influence. The cleanest instance is a bullseye: a round break with a center cone. A superstar smash has a number of narrow legs. A combination break has a principal divot with radiating traces. Resin restore works smartly on those as long as the spoil shouldn't be too considerable or contaminated. If you conceal a clean chip with clear tape, you avoid moisture and dirt from muddying the restore.

A crack can leap at a chip or at the brink. Edge cracks are incredibly complex. The bond line and the curvature of the glass concentrate stress, and a crack that touches the sting is at risk of spread. If the crack crosses the sweep of the motive force's wiper trail, a few states would recall that an inspection problem. North Carolina's defense inspection regulations consciousness on methods circumstance. While minor windshield blemishes aas a rule flow, break that obstructs the driving force's view can set off a fail. Put clearly, once you in finding your self peering round a crack rather than because of the glass, that's no longer dependable.

The Asheville safety inspection list for cracked windshields

Think of this checklist as a guided walkaround tailor-made to our prerequisites and the way nearby retailers operate. You can run as a result of it in ten minutes. If you discover a borderline case, any authentic Asheville vehicle glass fix store can verify your name, however this receives you eighty % of the manner there.

- Measure the harm. Use a coin. A area equals approximately 1 inch across. Chips beneath the dimensions of 1 / 4 and cracks beneath 6 inches are robust candidates for Asheville windshield repair. Anything longer or with numerous legs achieving to the threshold typically leans closer to Asheville windshield replacement.

- Check the driving force's view. Sit on your widely wide-spread location. If the smash sits within the accepted discipline of view, certainly within the wiper sweep, treat it extra strictly. Resin fills can go away optical distortion. If your ADAS digicam appears via that sector, plan for substitute and calibration as opposed to repair.
- Inspect the perimeters. Follow the outer inch of the glass. Edge cracks and any harm intersecting the frit band or the black ceramic vicinity hold added risk. If you notice a crack touching the urethane subject, call an Asheville auto glass service briskly.
- Look for contamination. Dirt, moisture, and oils slash restoration great. If the chip seems to be milky, the interlayer could have all started to delaminate, or moisture has crept in. Apply a strip of clean packing tape over brand new chips until a technician cleans and injects resin. Don't use duct tape; the adhesive residue makes matters worse.
- Consider the season and your habits. If you park outside at elevation or as a rule power over the Blue Ridge Parkway where the temperature swings, what seems to be secure at the moment also can run overnight. If you operate defrost on top heat opposed to a cold windshield, you're utilising a instant thermal gradient that lengthens cracks.

That's your 2nd and closing checklist for this text. The rest we'll deal with in undeniable prose, when you consider that your decision commonly comes from the nuance among those issues.

When restoration is the sensible choice

Repair has precise merits. It preserves the manufacturing facility [local windshield replacement asheville](#) seal, that is in most cases the most beneficial seal the automobile will ever see. It expenses a ways less than replacement and takes 30 to 45 mins in most circumstances. Many Asheville automobile glass restore techs offer mobilephone provider and might meet you in a driveway, administrative center lot, or maybe at a trailhead if the climate cooperates. Mobile automobile glass Asheville teams can stabilize a chip straight away so it doesn't grow into a bigger hardship.

I recommend fix when the wreck is small, latest, and faraway from the threshold. A recent bullseye smaller than a quarter, no legs longer than 1/2 an inch, sitting outside the driver's direct view, and not using a infection, is a textbook case. The technician will create a route into the holiday, vacuum out air, inject UV-curing resin, then therapy and polish. In the most beneficial outcomes, the ruin will become slightly obvious, about eighty to 90 p.c clearer than sooner than. The objective is structural, no longer beauty, so predict a faint scar in bound gentle. If any one gives you invisibility, they're overselling.

As for weather, resin likes dry glass. On damp days, a phone windshield fix Asheville tech might use heat or alcohol displacement to dry the smash, or they'll agenda for a window of sun. Shade is higher than direct sunlight, due to the fact warm can prematurely therapy the resin. A calm day reduces airborne dirt and dust infection. These are the info an incredible Asheville vehicle glass technician cares about.

When substitute is safer

Replacement takes over while wreck compromises construction or visibility. Long cracks, a number of impacts, chips within the motive force's wide-spread view, or any smash near or touching the threshold probably point to a brand new lite of glass. Vehicles with HUDs, rain sensors, sunlight coatings, acoustic interlayers, or ADAS cameras additionally impact the selection. A restore in the front of a digicam lens can create distortion that calibration can't repair. In the ones situations, Asheville windshield alternative avoids a permanent visual artifact.

Here is the place first-rate parts and strategy depend. Glass possibilities consist of OEM, OEM-equivalent from the same corporation with no the automaker brand, and aftermarket. OEM occasionally suits most competitive and consists of an appropriate optical residences for ADAS, however prime-quality aftermarket glass has improved dramatically. I seek glass with exact bracket placement, matching easy transmittance, and a sparkling frit development. The adhesive method subjects as an awful lot as the glass. Reputable outlets use prime-modulus, non-conductive urethane and apply the enterprise's reliable force-away time, which degrees from approximately 30 minutes to quite a few hours relying on temperature and humidity. If a store won't state their urethane company and treatment time, keep shopping.

ADAS calibration is now the norm. If your vehicle has a ahead camera, radar behind the brand, or lane departure sensors at the upper of the glass, alternative have to be observed by using calibration. Some structures self-calibrate with a avenue pressure at prescribed speeds and circumstances. Others require a static calibration with aims at excellent distances. Asheville auto glass replacement vendors in general companion with calibration specialists or invest in their very own package. The introduced value continues your safe practices structures straightforward. If someone prices a low

charge and says you don't desire calibration, ask them to sign that observation. Most will soar telling a one-of-a-kind story.

What “cell” can and can not do

Mobile service is a present in this the town. Between tight downtown parking and the actuality of mountain commutes, having a van meet you at your home in West Asheville or your job in Biltmore Park is not easy to beat. For chips and short cracks, phone car glass Asheville techs can complete a restoration curbside. For replacements, they may sometimes paintings on a stage driveway or parking space. Wind and climate set the limits. Heavy rain, blowing dirt, or subfreezing temperatures can bring about a deficient bond or contaminate the prep. A fabulous mobilephone tech will reschedule as opposed to minimize corners.

Calibration is the foremost constraint. Many static calibrations require a managed space with measured distances, stage flooring, and controlled lights. Some cell rigs hold collapsible objectives and virtual measuring platforms, however not all. If your vehicle necessities a static calibration, be prepared to swing by using a store after the mobile install or agenda the complete service at a facility. Mobile convenience shouldn't compromise the give up outcomes.

Insurance and payment, devoid of the quality-print headache

North Carolina insurers characteristically hide chip maintenance at no out-of-pocket settlement, on account that restore reduces claims. You can probably publication Asheville cracked windshield fix by way of your selected local glass shop, and that they'll course of the declare. Replacement falls lower than accomplished insurance subject for your deductible. If your deductible is greater than the alternative rate, chances are you'll pay cash. Ask for pricing on both OEM and excessive-excellent aftermarket glass and weigh it in opposition to your vehicle's age and the presence of ADAS.

One tip: for those who hold glass policy with a 3rd-celebration administrator, you continue to have the right to select your shop. The administrator may perhaps steer you to a country wide chain. Local Asheville car glass provider suppliers recurrently match community pricing and bring extra steady craftsmanship. Ask your mechanic or body save for a recommendation. They see whose urethane beads fail and whose don't.

The craft in the back of a valid installation

A blank, lengthy-lasting replacement is set field. The tech should still glove up, maintain the dash and paint, and de-trim with out breaking clips. The ancient urethane bead gets cut right down to a consistent thin layer, a strategy known as complete lower or short reduce depending on the store. The pinch weld must continue to be scratch-loose. Any nicks desire primer. Glass prep follows the adhesive producer's technique, which include primer at the frit if special. The bead dimension and form get laid with care so contact and squeeze-out are steady. The glass sets once, then is aligned evenly. You'd be surprised what number of squeaks and leaks commence with a rushed set.

Inside, reflect brackets and rain sensors want properly seating. Acoustic glass has a directional aspect. Sun sensors and HUDs require the fitting tint or laminated stack. After deploy, a leak look at various and a road examine in finding rattles earlier than you do. Cure time things. If the urethane states a 60-minute minimal at 73 levels and 50 percent humidity, the tech could explain how regional temperature alters that. In iciness, riskless pressure-away times is additionally longer.

Edge situations I've visible in Asheville

Fleet vans with ladder racks have a tendency to flex their cabins, which may open up a poorly bonded corner. If you run a construction or provider fleet, insist on excessive-modulus urethane and consistent bead peak. Subaru windshields with EyeSight cameras want proper positioning, otherwise you'll chase calibration mistakes. Mazda and Toyota units with acoustic windshields have faith in special interlayers for cabin quiet; aftermarket glass with out the acoustic layer can switch the sound profile on the street. Jeep Wranglers that see Forest Service roads gain from tempered upper lites and widely used chip exams considering that the upright glass takes stones face-on. And for somebody who leaves a motor vehicle on the Parkway forget for daybreak images, avert a shade within the windshield. A bloodless-soaked glass exposed to a blast of direct sunlight and then a short defrost is a traditional recipe for a strain crack.

Maintenance that stretches the lifestyles of your repair

If you've had a resin repair, deliver it 24 hours in the past a prime-tension vehicle wash. Avoid hot temperature adjustments for an afternoon. Replace your wiper blades two or 3 instances a 12 months, more once you are living

beneath bushes. Dirty blades drag grit that scratches the glass and wears out each the blade and the windshield. Don't slam doors with the windows up; stress spikes can pressure marginal cracks. Keep a small roll of clear packing tape inside the glovebox. When a chip happens on a street vacation, tape it until eventually that you would be able to get an Asheville windshield restore. That undemanding go continuously doubles the danger of an invisible restoration.

Clean the glass with a committed auto glass purifier and a microfiber towel. Household ammonia cleaners can spoil window tint and go away streaks. Work inside the color. Wipe in overlapping strokes. If you've a HUD or digicam, evade smearing oily dressings near the sensor aspect.

How to settle on a store you'll trust

The highest quality Asheville car glass retail outlets glance you in the attention and explain their reasoning. They don't push alternative when a repair is viable, and they don't possibility a negative restoration whilst replacement is smarter. Ask what glass emblem they'll use, which urethane procedure they have faith, how they take care of ADAS calibration, and what their workmanship warranty covers. If they supply telephone provider, ask how they tackle climate and cleanliness. If you need Asheville car or truck window alternative on a aspect or returned glass, confirm even if they stock tempered and laminated recommendations and whether the car or truck makes use of pinch-weld or encapsulated frames.

You ought to additionally cost aftercare. A satisfactory retailer invites you to come back once you understand a whistle at forty five mph or a drip for the time of a downpour. They gained't inform you that wind noise is widespread. It isn't.

A note on area and rear glass

While this list focuses on windshields, aspect and rear home windows deserve a transient mention. Most area windows are tempered, now not laminated. When they holiday, they shatter into pellets and require Asheville vehicle glass replacement in preference to restore. Rear windows differ. Some fashionable SUVs use laminated to come back glass with embedded defrosters and antennas. A smooth install involves new clips, vapor obstacles, and alignment so vigour home windows music smoothly. If a holiday entails robbery break in a parking space, call your insurer and ask a regional Asheville vehicle glass provider to maintain the hole speedy. A transitory plastic cowl retains rain and critters out, however it will have to be a brief-term fix in basic terms.

Driving forward with confidence

A windshield crack is small except it isn't. Most drivers understand the sensation of staring at a line creep throughout the glass from one weekday to the next. The nice news is you will have a clear path to care for it. Use the listing, take a photograph with a coin for scale, then name a relied on Asheville car glass repair store. If the spoil qualifies for restoration, permit a mobilephone technician meet you where you might be and stabilize it beforehand a higher cold night time or the subsequent gravel truck. If alternative makes greater experience, prioritize craftsmanship and calibration. That manner your auto seems to be appropriate, sounds appropriate, and drives with the identical safety margin the engineers designed.

Asheville is a town of lengthy views and winding roads. You deserve a windshield that maintains either in concentration. Whether you desire a swift chip fill, a complete Asheville windshield alternative, or counsel about an bizarre crack close a rain sensor, lean on nearby technology. The appropriate consequences come from timely motion, fair comparison, and careful arms.