

Good garage and driveway lighting in Denver is equal parts safety, comfort, and curb appeal. The Front Range throws some specific challenges at a home. Elevation makes light feel brighter and bluer, snow reflects that light right back, and the daily swing from bright sun to dark evening can be abrupt, especially in winter. If your fixtures glare, ice over, or fail early, you will feel it every week. If they work, you barely think about them, you just pull in, park, and walk inside without drama.

What follows is a practical guide to exterior lighting Denver homeowners can use to get reliable, attractive results around garages, driveways, and the paths that connect them. It blends local field notes with fundamentals, so you can plan confidently, whether you handle the work yourself or hire outdoor lighting services Denver trusts for lighting installations Denver wide.

What matters most at the garage and driveway

Driveways are where moving cars meet people, dogs, and bikes. You want even, low glare illumination that lets you see grade changes and ice, not a blast of light that blinds everyone. At the garage, you want clean light on the door approach and keypad, a welcoming tone at the side door, and a gentle handoff to denver pathway lighting that leads to the porch or yard.

Getting this right comes down to five variables you can control: light level, fixture placement, beam shape, color temperature, and controls.

- Light level. Target 2 to 5 foot-candles on the driveway at night. That translates roughly to 200 to 500 lumens per 100 square feet, depending on mounting height and beam spread.
- Fixture placement. Keep light sources higher than eye level, usually 8 to 11 feet, and avoid pointing bare LEDs toward the street.
- Beam shape. Flood beams fill space, but they can glare. Narrow beams outline features. Linears under eaves give uniform coverage.
- Color temperature. In Denver's bright, dry climate, 2700 to 3000 K reads warm without going amber. Cooler 4000 K can look harsh on snow.
- Controls. Motion plus an overnight low level is friendly to energy, neighbors, and wildlife.

Those numbers are a starting point, not a rule. A steep alley garage near Sloan's Lake deserves a different mix than a wide south suburb driveway in Highlands Ranch. The trick is balancing visibility and comfort.



Colorado climate and altitude shape the choices

At a mile high, ultraviolet exposure chews through cheap plastics and sealants. Lenses haze, gaskets crack, and finishes chalk faster. Winter days swing from sun to snow in hours, then refreeze by night. Summer throws hail at anything left outside. If you pick fixtures and hardware like you might for a coastal rental, you will be replacing them in three years.

Look for powder coated aluminum or marine grade stainless housings, UV stabilized polycarbonate lenses, and gaskets rated for wet locations. In marketing terms, that often shows up as IP65 or better, but dig into the spec. A fixture can be

IP65 and still use thin screws that rust by the second winter. For denver outdoor fixtures that last, I prefer cast housings, captive gaskets, and a finish warranty of at least five years. That matches the pace of exterior lighting Denver homeowners should expect before the next refresh.

Snow and ice deserve their own note. Uplights aimed at trees will get buried in drifts. For driveway edges, a short bollard with a sealed top and thick lens holds up better than a delicate path light. Under-eave strips keep their performance in storms, since snow rarely sticks to the soffit. If your garage faces north, expect more icing on fixtures mounted to the face. A slight recess under the eave or a cap over the luminaire reduces icicles that block sensors.

Light levels without guesswork

If you want to avoid trial and error with denver exterior lighting, measure. A simple rule of thumb works for most homes. Count the driveway area, pick a mounting height, then select fixture output and number.

Example 1, a 40 by 18 foot straight driveway in Park Hill, about 720 square feet:

- Goal is 2 to 3 foot-candles average. Using a pair of soffit downlights at 10 feet high, each at 1,000 lumens with a 60 degree beam, gives a good baseline. Space them 10 to 12 feet apart, keep the first one 3 to 4 feet in from the garage edge to avoid hot spots on the door.

Example 2, an alley garage in West Colfax with a 20 foot apron:

- Add a wall mounted fixture over the door at 900 to 1200 lumens, full cutoff or shielded, aimed down at 30 to 45 degrees. Pair that with a motion sensor. Behind the apron, add a low voltage linear strip under the eave along the back fence at 3 to 5 watts per foot to wash the surface softly. It calms the space without broadcasting light to neighbors.

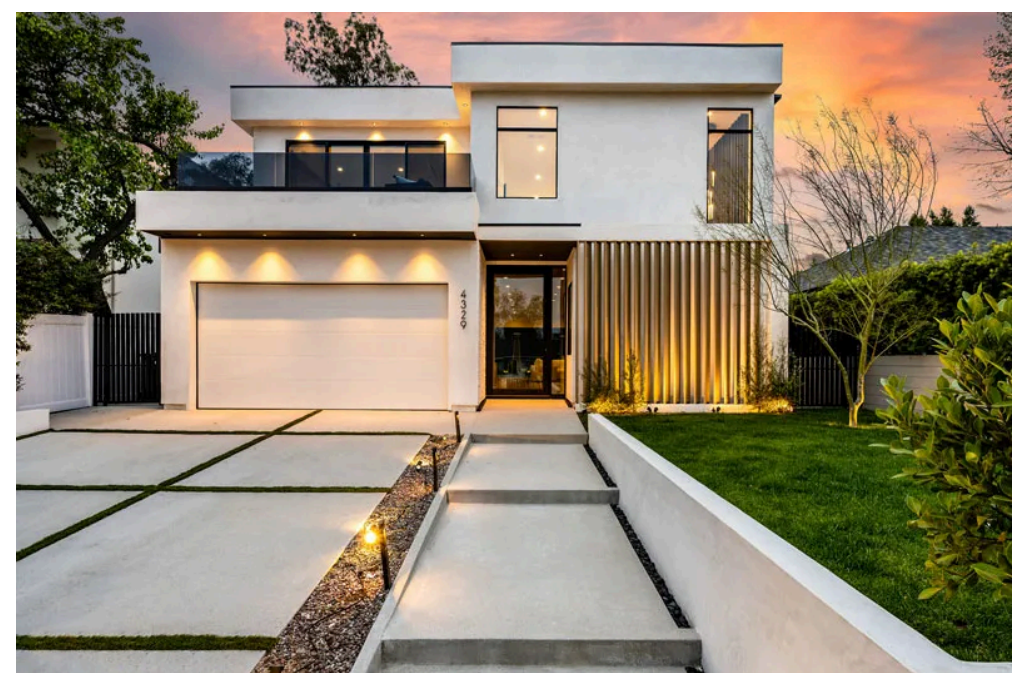
If you plan for denver [outdoor lighting denver](#) pathway lighting, consider the handoff. You want the first two or three steps from the driveway to the side door to feel gently brighter, then ease off as you approach the main entry. A 1 foot-candle path is sufficient when eyes have adapted.

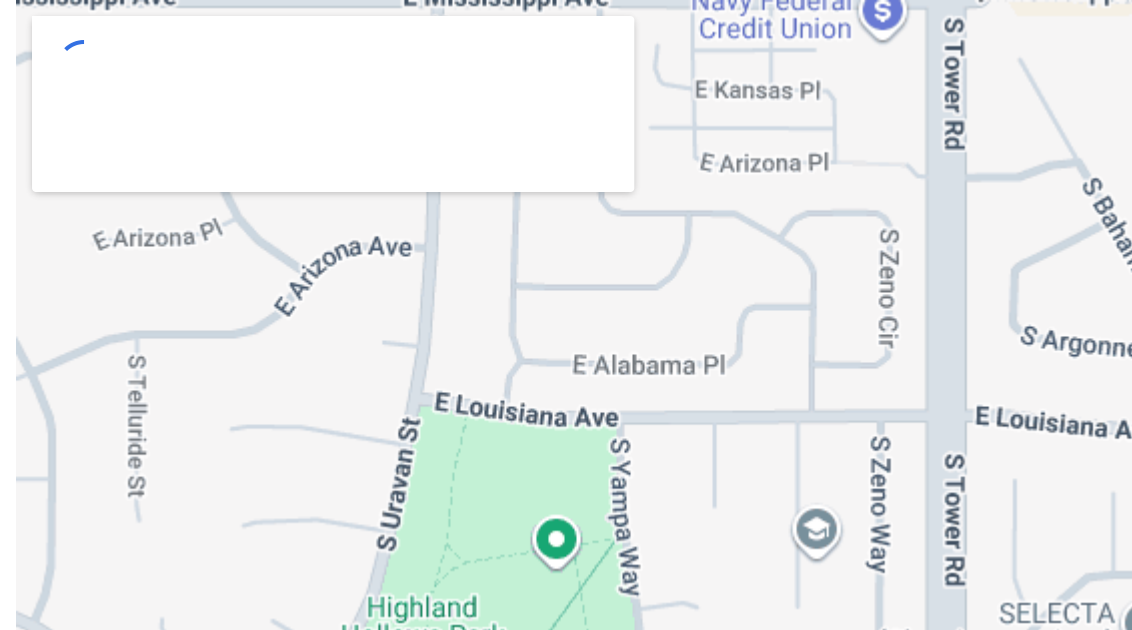
Beam control beats big wattage

Most complaints I hear about outdoor lighting in Denver have little to do with brightness and everything to do with glare. You can fix 80 percent of glare with three tactics.

First, use full cutoff or shielded fixtures where you can. The label often reads Dark Sky friendly or has a BUG rating with low uplight and glare. These keep light on the ground and off the neighbor's bedroom.

Second, aim for uniformity, not brightness. A pair of smaller fixtures, slightly overlapping, looks calmer than one big flood. If you stand at typical eye level, about 5 and a half feet, and can see the LED emitters directly, you will get glare. Spend the extra time to aim or shield until you cannot.





Third, exploit under-eave locations. Linear LED channels installed in soffits create a quiet ceiling of light that spills to the driveway without revealing the source. For outdoor lighting solutions Denver pros often route power through the attic, then run a dedicated low voltage channel, which keeps service simple and the look clean.

Color, CRI, and how snow changes the scene

[outdoor lighting denver](#)

Denver light is sharp. On a snowy night, 4000 K LEDs make the scene look blue and clinical, like a parking lot or a clinic. If you want a warmer, residential feel that plays well with brick and wood, pick 2700 to 3000 K. High CRI, at least 80 and ideally 90, helps with color rendering on cars and plants. You will read paint colors more accurately and identify ice patches sooner.

If you are matching denver landscape lighting elsewhere on the property, be consistent. Mixing warm path lights with cool garage floods makes the house look pieced together. Most good brands in landscape lighting Denver offer matched color temperatures across wall lights, path lights, and under-eave strips.

Controls that serve the way you live

Motion sensors work, but program them carefully in the city. Too sensitive, and a raccoon or drifting snow will cycle your lights all night. Too dull, and you are walking in the dark. The sweet spot is a dual level setup. Run fixtures at 20 to 40 percent brightness from dusk to dawn, then jump to full output on motion for 5 to 10 minutes. This method, popular in outdoor lighting systems Denver wide, offers security presence without the feel of a stadium.

Pair a photo sensor with a time clock or a smart switch. Photo sensors adjust to seasonal changes in daylight automatically, which is handy when sunset swings by more than an hour. A small astronomic timer, often built into smart controls, avoids a separate sensor and lets you schedule scenes, like a soft pathway cue when a garage door opens.

If wildlife is part of your yard, keep the overnight baseline low. Bats, owls, and moths do better when denver's outdoor lighting stays directed and dimmer. Shielding and warmer color temperature help here too.

Driveway shapes and what tends to work

Straight runs are easy, curved or flag drives take more planning, and alley access benefits from targeted light.

A narrow straight driveway, common in Washington Park bungalows, gets nice coverage with a pair of downlights under the garage eave and a slim, shielded wall light at the side door. If the driveway doubles as a hoop court for the kids, add a switchable scene that bumps to 7 to 8 foot-candles for play, then back down.

Curved drives in Cherry Hills or parts of Littleton need fixtures that follow the bend. Short bollards with wide lateral throw every 12 to 16 feet work, but mind snow shovels. Mount them a foot off the pavement edge to survive winter. If

you do not want verticals, consider in-grade step lights mounted in the curb or drive edge, but only where drainage is excellent. Water and deicing salts attack cheap in-grade housings.

Alley garages, everywhere from Baker to Sunnyside, benefit from a precise wash at the property line, not a spray into the alley. A pair of tight beam wall packs under the eave, 8 to 10 feet high, aimed to overlap at the apron, gives a bright but neighbor friendly field of view. Motion is essential here to save energy and avoid lighting up the whole block every time a car passes.

The garage facade deserves more than a flood

Many homes rely on a single coach light on either side of the garage door. That can look harsh, then fade fast toward the apron. You can do better with layered denver outdoor illumination.

Recessed soffit downlights provide even light on the apron. A slim, full cutoff wall fixture over the garage door gives task light on the keypad and edge of the door. If your facade has stone or shiplap, a gentle grazing light from an under-eave linear strip adds texture without shining at the street.

For carriage house style doors, sconces can still work. Choose boxed designs with frosted glass or internal baffles, and keep output under 600 lumens per fixture. Higher output sconces with clear glass glare badly on snowy nights. If you love the look of clear glass, pick a lamp with a filament style LED but low wattage, or pair it with downlights to handle real lighting while the sconce serves as a decorative marker.

Integrating with denver garden lighting and the rest of the yard

Garage and driveway light should transition into denver yard lighting without abrupt steps. If your landscape includes trees or a xeriscape bed along the drive, integrate low voltage path lights or mini wash lights. In landscape lighting Denver projects, I often tie the driveway zone into the same transformer as the front walk, then give it a separate dimmable tap. That way, you can set the driveway brighter for arrivals, while the garden glow stays relaxed.



Garden elements in Denver tend to include native grasses, pines, and hardy perennials. Grasses show beautifully with cross lighting from low, shielded fixtures. Pines and junipers take narrow uplights, but be mindful of snow loading. Uplights that sit proud of grade get buried and keep shining into the snow, wasting energy. Place them on small risers or tuck them under eaves where possible.

Materials, ratings, and the reality of Denver weather

For outdoor lighting Colorado homes can count on, check these details in the spec sheet. Wet location rating, not just damp. An ambient temperature range down to at least minus 20 degrees Fahrenheit. Replaceable driver or at least a clear driver warranty. Bronze or black finishes resist UV better than bright whites in our sun.

Fasteners need attention. Stainless steel screws with anti seize, or coated fasteners that match the fixture finish, resist rust streaks that show on stucco and siding. For concrete or masonry, use stainless Tapcon or sleeve anchors, not zinc. Once

zinc rusts, the streaks can stain stone permanently.

When clients call about denver outdoor lights that failed early, nine times out of ten the culprit is water ingress from a compromised gasket or a back box that was not sealed. Use a bead of exterior grade sealant around the top half of the box, add a drain hole at the bottom where codes allow, and always create a drip loop in the wiring.

Electrical and code basics without the jargon

You do not need to memorize the NEC to make good decisions. A few rules keep you out of trouble.

Any exterior receptacle or circuit that may be used outdoors should be on GFCI protection. Many Denver jurisdictions also require AFCI on residential branch circuits. Check your panel labeling, then add GFCI at the breaker or device if needed. Low voltage landscape lighting generally runs off a transformer at 12 to 15 volts and does not need GFCI on the low side, but the transformer primary still does.

Conduit depth matters. If you trench, 18 inches is typical for PVC with GFCI protection, shallower for low voltage under most conditions, but verify with your local inspector. In older Denver alleys, you will hit surprises, from roots to old utility lines only a spade deep. Call 811 before you dig, then hand dig the last foot.

Surge protection extends LED life. Our summer storms roll in fast. A small surge protector at the panel and a secondary unit at the transformer can save fixtures and drivers. It is cheap insurance.

Finally, label zones. If you or an outdoor lighting installations denver contractor set up multiple zones, write them down, panel to transformer to switch. Six months later, you will forget which dimmer runs the driveway apron versus the garden wall.

Controls and smart integration that actually help

Some homeowners in outdoor lighting denver projects ask for phone control, then never use it. Smart is useful when it serves a routine. Good scenes include arrival, late night, and away. Arrival bumps the garage and driveway, opens a path to the door, and lights the keypad. Late night dims everything to a soft base and keeps motion. Away runs a presence simulation inside while keeping exterior light modest to avoid the empty house look.

Avoid linking every outdoor light to motion. Keep at least one steady baseline at night. It helps your eyes adapt and avoids constant switching, which can be hard on some drivers in cold weather.

When to hire, when to DIY

If you are hanging a pair of sconces and a motion light, a capable DIYer with a tester and care can handle it. If you are trenching, adding a new transformer, or tying into attic runs, hire a licensed electrician or a firm that specializes in outdoor lighting services denver homeowners recommend. The value is not just safety. A seasoned installer has a bag of simple tricks, like how far to pull fixtures off stucco to avoid thermal cracking, or where to mount a photo sensor to dodge reflected snow glare.

For larger properties or when tying denver landscape lighting into a driveway plan, professional photometrics help. A simple layout drawing and a few point calculations save nights of tweaking.

Real numbers from a recent Denver project

A client in Hilltop had a 50 by 22 foot concrete drive and a three car garage with a shallow eave, common in mid century homes. The initial setup was two lantern sconces at 1,100 lumens each. It looked bright from the street and dim on the ground. We replaced the lanterns with 600 lumen boxed sconces, added three 4 inch soffit downlights at 900 lumens, 40 degree beams, and a 10 foot linear under the central eave at 4 watts per foot.

On a clear night, ground readings went from a patchy 0.8 to 2.2 foot-candles to a uniform 1.9 to 3.4, with a slightly brighter band near the garage door for tasks. We set the downlights at 35 percent from dusk, lifted to full on motion, and left the linear at a fixed 25 percent all evening. The neighbors commented that it looked softer, even though the light levels on the ground were higher, because glare was gone.

Common mistakes and how to avoid them

Too cool color temperature tops the list. It makes snow stark and brick flat. Wrong aiming is next. A small tilt on a flood can send light into a bedroom across the street. Oversized sconces with clear glass follow close behind, harsh in winter and buggy in summer.

Another hidden mistake is mounting height. Fixtures at 7 feet or below are easy to bump, glare at eye level, and collect snow spray. If your soffit is low, consider a linear channel tucked back, or move lights higher on the gable.

Last, mismatched brands and drivers can lead to flicker when dimmed. If you want a dual level setup, verify that fixtures and drivers handle low dimming in cold. Test a single circuit at 20 percent on a January night. If the light pulses, swap the driver or change the control.

A quick pre-project checklist

- Walk the route at night and note glare, dark spots, and ice patches.
- Measure mounting heights, soffit depths, and available box locations.
- Decide on color temperature once, then apply it everywhere.
- Choose control logic, photo sensor plus timer, motion with dual level, or both.
- Confirm power sources, transformer location, and trench paths before ordering fixtures.

Maintenance that keeps performance steady

- Rinse lenses and housings twice a year, early spring and late fall, to clear dust and deicing residue.
- Check gaskets, screws, and caulk every fall. Replace any cracked seals before freeze.
- Trim plants around path and bollard lights so beams stay clean and do not scorch leaves.
- Test motion sensor ranges seasonally. Snow piles and new growth change detection angles.
- Recalibrate dimmer scenes when seasons shift. Winter wants a bit more baseline to counter early dark.

Budget ranges that align with expectations

Prices vary by brand and scope, but realistic numbers help planning. For a straightforward driveway and garage facade using quality denver outdoor lighting, materials may run 1,200 to 3,000 dollars, including fixtures, drivers, and basic controls. Add 1,500 to 4,000 dollars for professional installation, more with trenching or panel work. Integrating denver garden lighting, path lights, and a shared transformer can lift the total to 5,000 to 10,000 dollars on larger lots. Cheaper is possible, but Denver's climate penalizes bargain gear. Spending a little more on sealed housings and solid finishes pays for itself in avoided replacements.

Choosing fixtures that match Denver homes

Hint at style without letting it drive the spec. Mid century ranches take to slim, horizontal fixtures and discrete downlights. Tudors and Denver Squares feel right with boxed sconces and tight grazing to show texture. New builds with big soffits are perfect for continuous under-eave channels that dissolve into the architecture.

In every case, prioritize denver lighting solutions with full cutoff optics, high CRI, and warm color. If you love a decorative piece that is bright but glary, pair it with a quiet downlight that carries the real workload. That is the backbone of outdoor denver lighting that reads intentional.

How this ties into broader curb appeal

Garage and driveway light often sit in photos that sell a house. Even if you are not moving, you notice the difference. Balanced light makes concrete look clean and plants read lush. It also changes how you use space. A well lit apron becomes a safe bike repair station, a place to unload camping gear after a late return from the high country, or a chalk art canvas for kids on long July evenings.

When the driveway scene connects to denver garden lighting and a modest glow on the facade, the house feels finished. That is the mark of exterior lighting denver projects that were planned as part of the landscape, not bolted on afterward.

Working with local pros and suppliers

Denver has a healthy network of vendors and installers who focus on outdoor lighting colorado wide. If you want a turnkey package, look for teams that show you photometrics, sample fixtures in your color temperature, and written warranties that address finish and driver life. Ask to see a reference property at night, not just a daytime brochure. For outdoor lighting solutions denver homeowners can live with season to season, night visits make the difference.

If you run your own project, local supply houses can be more helpful than big box stores. Staff know which denver outdoor fixtures come back with issues and which handle hail. They have seen how a 3000 K lamp looks on red brick versus tan stucco. That lived experience shortens your learning curve.

Bringing it all together

Good driveway and garage lighting never shouts. It puts light where you need it, keeps it out of your eyes, and stays reliable when Denver weather decides to test it. Favor warm, shielded, and layered over bright, exposed, and singular. Use controls that match routines, not features for their own sake. Protect against UV, water, and storm surges. Connect the driveway to the path, then to the porch, as one coherent system.

Do that, and you end up with denver exterior lighting that looks good on the best summer evening, still works on a snowy January night, and quietly serves every day in between. Whether you add a pair of well aimed downlights or invest in a full plan with outdoor lighting installations denver teams provide, the payoff is immediate. Your home feels calmer when you pull in. Your steps to the door feel safer. And the place looks like someone cared about the details, because they did.